

This file provided by

INFINITY

d a t a c o r p

Switch to Infinity Data Corp for your processing needs! Infinity offers great rates, excellent customer support and a wide range of payment processing solutions.

<http://www.infinitydata.com/>

Call Today!
866 746 8931

World Headquarters/ North America:

Hypercom Corporation
2851 W. Kathleen Road, Phoenix, Arizona 85053, USA • Tel: +1.602.504.5000 • Fax: +1.602.504.4655

HYC Latin America:

Hypercom Industria e Comercio LTDA
Centro Empresarial Atibaia
Rodovia Dom Pedro 1, KM 07, 5 Av.
Tegula, 888-Ponte Alta
Atibaia 12940-000, Brazil

Tel: +55.11.4417.7000
Fax: +55.11.4417.7060

HYC EMEA:

Hypercom EMEA
Unit 2, Woking Eight
Forsyth Road
Woking, GU21 5SB,
United Kingdom

Tel: +44.1483.718600
Fax: +44.1483.718601

HYC Asia:

Hypercom Asia
21/F Metro Centre II
21 Lam Hing Street
Kowloon Bay, Kowloon
Hong Kong

Tel: +85.2.2561.6800
Fax: +85.2.2561.5890

HYC Australia:

Hypercom Australia
Unit 1,
11 Orion Road
Lane Cove, NSW 2066
Australia

Tel: +612.9420.6444
Fax: +612.9420.6466

©2004 Hypercom Corporation, all rights reserved. Hypercom and the Hypercom logo are registered trademarks of Hypercom Corporation. Optimum is a trademark of Hypercom Corporation. All other products or services mentioned in this document are trademarks, service marks, registered trademarks or registered service marks of their respective owners.

Celebrating 26 years of technology excellence, innovation and leadership, Hypercom Corporation is a leading global provider of electronic payment solutions that add value at the point-of-transaction for consumers, merchants and acquirers, and yield increased profitability for its customers. Widely recognized as the global payment technology innovator, Hypercom delivers comprehensive card payment terminal, network and server solutions that help merchants and financial institutions generate revenues and increase profits.

Headquartered in Phoenix, Arizona, Hypercom's card payment terminal, network and server solutions are leading the transformation of electronic payments in more than 100 countries.

COMPLIANCE:

- FCC Part 15 (ICES-003)
- FCC Part 68 (CS-03)
- CTR21
- EN55022
- EN55024
- EN60950
- CISPR 22
- AS/NZS 3260
- AS/NZS 3548

940435-002, Rev. A

09/04



www.hypercom.com

Terminal Installation Guide

 **OptimumTMT4100**



www.hypercom.com

Optimum T4100 Installation Guide

Equipment Check List →

WARNING:

- Do not disassemble the AC adapter. Only qualified technicians should service the adapter.
- The AC adapter was designed for indoor use only; do not expose to rain or snow.
- Do not immerse in fluid.



Optimum T4100



AC Adapter



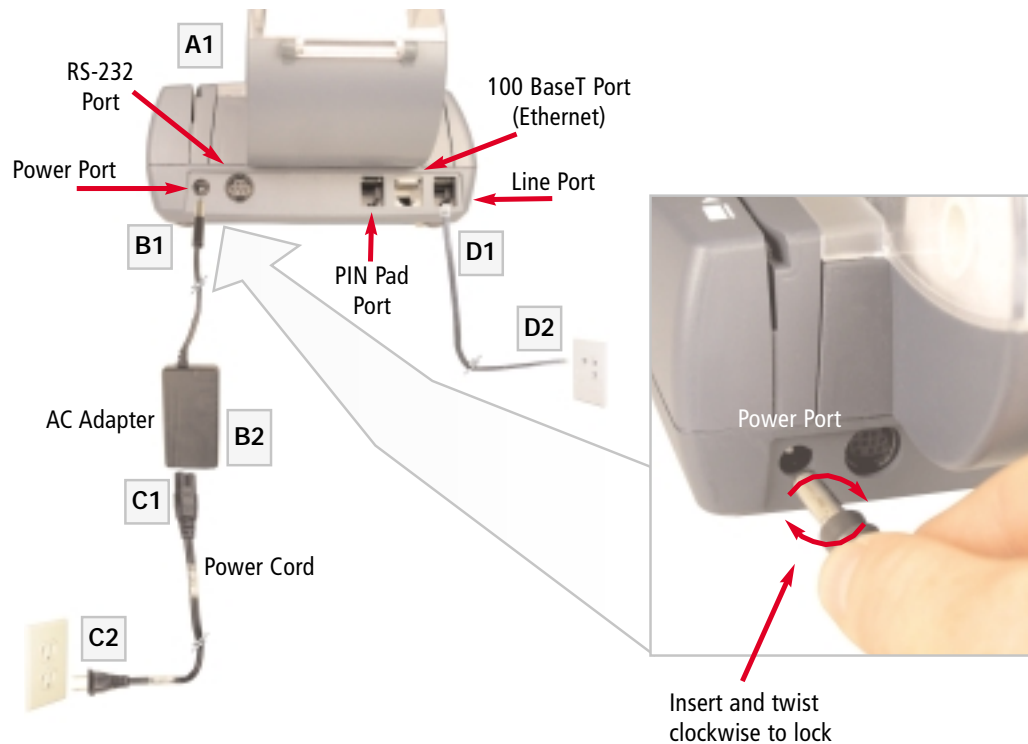
Power Cord



Telephone Cable

Paper Roll

Power and Telephone Line Connection



Paper Roll Installation

